

Chaudhari Kalabhai Khetabhai Bhedaru Bhagat Charitable Trust

Operating as: K.K. Bhedru Charitable Trust



"Empowerment is Our Mother Tongue."

Date of Establishment- 30 June 2014

Legal Status	Regn Number	NGO Darpan ID	PAN	12A	80G	CSR 1	MSME	TAN
Trust	F/5797/Banaskantha	GJ/2020/0250578	AABTC8815E	AABTC8815EE20214	AABTC8815EF20214	CSR000113107	GJ-04-0019524	AHMC06767F

Vision Statement

To build an inclusive and empowered society by delivering accessible vocational programs, promoting digital literacy, ensuring equitable education, supporting holistic well-being, fostering cultural unity, and strengthening community infrastructure.

Mission Statement

By 2030, we aim to educate and empower over 10,000 underprivileged children, enhance digital literacy for youth and women, provide vocational training, support senior citizens, deliver healthcare services, and collaborate with grassroots NGOs to create a ripple effect of transformation across India.

Core Values

Compassion
Driven by empathy to serve the most marginalized communities.

Commitment
Dedicated to long-term sustainable development and grassroots impact.

Collective Action
Believing in the power of partnerships and community collaboration.

Transparency
Upholding accountability in financial and operational practices.

Market Yard, PO. and TA Lakhani, Dist., Banaskantha, Gujarat - 385581

Laljibhai Patel (Founder & Chairman)

+91 9428136391 / +91 6352460039

laljibhaipatel5@gmail.com | support@kkbhedru.org

<https://kkbhedru.org.in/>

K.K. Bhedru Charitable Trust, officially registered as Chaudhari Kalabhai Khetabhai Bhedaru Bhagat Charitable Trust, was established on 30 June 2014 in Lakhani, Banaskantha, Gujarat. The Trust was born from a simple yet powerful realization, that lasting social change begins at the grassroots, and that the most marginalized communities, particularly in rural India, deserve more than fleeting handouts; they deserve sustained opportunity, dignity, and empowerment.

Founded with a vision to build an inclusive and empowered society, the Trust focuses on addressing the root causes of poverty, inequality, and exclusion. Its work spans education, healthcare, digital literacy, women's empowerment, senior citizen welfare, infrastructure development, and animal welfare, recognizing that community development is incomplete without compassion for all living beings.

In alignment with the United Nations Sustainable Development Goals (SDGs), the Trust operates with a theory of change rooted in equity, collaboration, and long-term impact. What began as a small initiative in the Banaskantha district has today grown into a movement touching the lives of thousands across Gujarat.

Founding Story

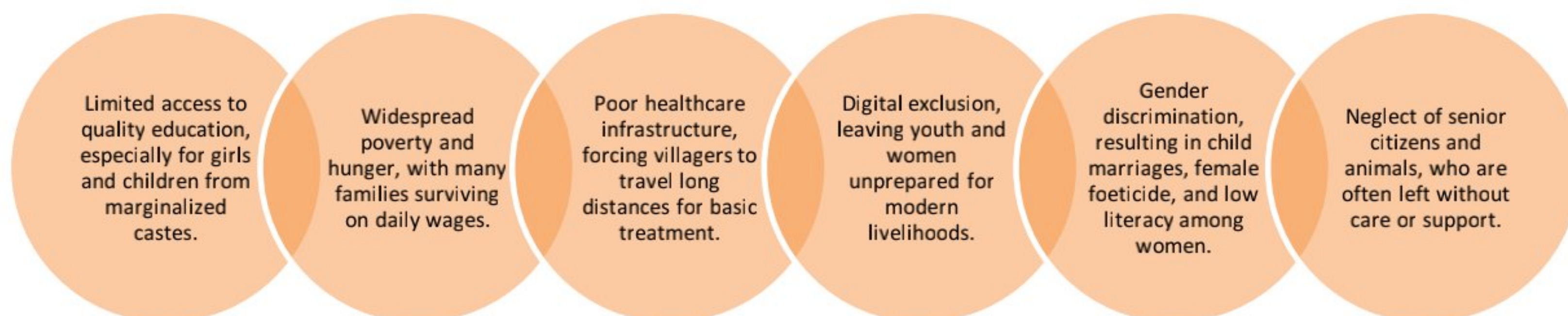
The story of K.K. Bhedru Charitable Trust is not one of sudden inspiration, but of quiet, persistent service spanning over two decades. Long before the Trust was formally registered in 2014, its founder, Mr. Laljibhai Patel, had already begun working at the community level, organizing small educational support groups, helping families in distress, and offering whatever assistance he could to those left behind by the system.

Mr. Laljibhai Patel, a man of modest means but immense vision, believed that education was the only permanent solution to poverty. In the early 2000s, he started by tutoring a handful of children under a tree, providing them not just academic guidance but also the belief that they too could dream beyond their circumstances.

As word spread, so did the need. Families came forward with stories of struggle, children forced into labor, girls married off early, elders neglected, and communities deprived of basic healthcare and clean water. Mr. Patel realized that individual efforts, while heartfelt, were not enough. A structured, scalable, and transparent organization was needed to channel resources, attract partners, and create lasting infrastructure. Thus, in 2014, with the support of like-minded individuals including Mr. Bhadrabhai Patel, Mr. Bharatbhai Chaudhary, and later Mr. Dineshbhai Patel, the K.K. Bhedru Charitable Trust was formally established. The Trust was named to honor the legacy of Chaudhari Kalabhai Khetabhai Bhedaru Bhagat, a reminder that service to humanity is the highest calling.

Background

Banaskantha, the second largest district in Gujarat, is a land of contrasts. While it has contributed significantly to the state's economy through agriculture and dairy, large parts of the district remain underserved, drought-prone, and economically backward. Rural communities here face acute challenges:



It was in this context that K.K. Bhedru Charitable Trust began its journey. The Trust recognized early on that development cannot be piecemeal, it must address the interlinked nature of poverty. A child cannot learn on an empty stomach. A woman cannot become financially independent without digital skills. A community cannot thrive if its elders and animals are forgotten.

Over the past decade, the Trust has grown into a multi-dimensional organization, operating schools, training centers, healthcare camps, and infrastructure projects across Jamnagar, Rajkot, Dhrol, Tharad, Junagarh, and beyond. It has partnered with CSR donors, individual philanthropists, and grassroots NGOs to amplify its impact. Today, K.K. Bhedru Charitable Trust stands as a beacon of hope in rural Gujarat, proof that with compassion, commitment, and collective action, even the deepest-rooted challenges can be overcome.

The Problem Statement

Despite India's rapid economic growth, rural and tribal communities, particularly in regions like Banaskantha, Gujarat, continue to face deep-rooted systemic challenges. Development has largely remained urban-centric, leaving millions trapped in cycles of poverty, illiteracy, malnutrition, and social exclusion. K.K. Bhedru Charitable Trust works in some of the most underserved pockets of Gujarat, where the following interconnected issues persist:



Observations

Challenge	Ground Reality (Based on Field Observations)
Illiteracy & Dropouts	In many villages across Banaskantha, school dropout rates spike after Class 8, especially among girls. Lack of career guidance and coaching for competitive exams keeps rural youth out of government jobs and higher education.
Digital Exclusion	Over 250 women trained by the Trust in FY 2024-25 had never used a computer or smartphone for financial transactions before. Most were unaware of online fraud risks or digital savings tools.
Hunger & Malnutrition	During community outreach drives, the Trust served tea/buttermilk to over 10,000 individuals, a small indicator of the scale of food insecurity in surrounding areas.
Healthcare Blind Spots	Health camps organized in partnership with the Billion Hearts Foundation revealed undiagnosed hypertension and heart issues among pilgrims and villagers who had never undergone basic health screenings.
Water Scarcity	The Trust's investment in borewells and irrigation for over 1,000 plants across 25,000 sq. ft. highlights the acute need for water conservation and agricultural support in this semi-arid region.

Statement of Need

The need is urgent and clear: Without targeted, grassroots intervention, vulnerable communities in rural Gujarat will remain trapped in intergenerational poverty.

- Children need more than enrollment; they need quality learning support, mentorship, and pathways to dignified employment.
- Women need more than awareness, they need hands-on digital and vocational training to become financially independent.
- Communities need more than temporary aid, they need sustainable infrastructure, healthcare access, and social safety nets for their elders and animals.

K.K. Bhedru Charitable Trust exists to fill these critical gaps where government reach is limited and market forces have failed to penetrate.

Theory of Change

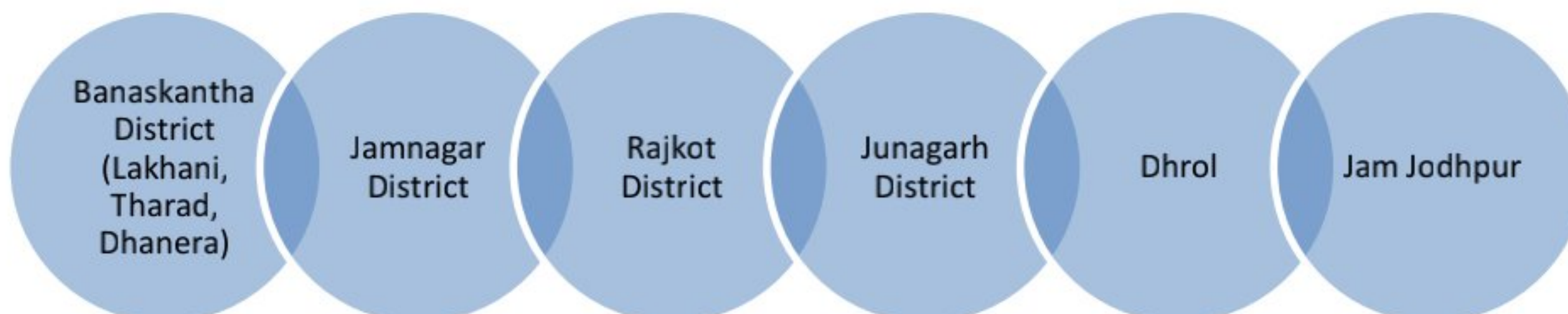
At K.K. Bhedru Charitable Trust, we believe that lasting social transformation happens when multiple interconnected needs are addressed simultaneously, and when communities are active participants in their own development. Our Theory of Change is built on the following logic:

If We...	Then...	Leading to...
Provide quality academic support, coaching, and learning resources to underprivileged children	They will stay in school, perform better, and aspire to higher education and careers	A new generation of educated, empowered youth who can break the cycle of poverty
Equip women and youth with digital literacy and vocational skills	They will access better livelihood opportunities, manage finances independently, and resist exploitation	Economically self-reliant families and gender-equitable communities
Conduct healthcare camps and awareness programs in remote areas	Preventable diseases will be detected early, and communities will adopt healthier practices	Stronger, healthier populations capable of productive lives
Invest in infrastructure—clean water, computer labs, furniture, sanitation	Learning environments become conducive, and students attend school regularly	Improved educational outcomes and dignified learning spaces
Care for senior citizens and animals through dedicated programs	Vulnerable beings are not left behind, and communities embrace compassion as a core value	An inclusive, humane society where no one is forgotten
Collaborate with CSR partners, individual donors, and grassroots NGOs	Resources are pooled, expertise is shared, and impact is scaled	A ripple effect of transformation across multiple villages and districts

Target Beneficiaries



Geographic Focus Area



Key Programs

Program	Description	Target Beneficiaries	Geographic Reach
Project Sampurna Shiksha	Comprehensive academic support including remedial classes, coaching for Gujarat PSC and UPSC exams, career orientation, and employment guidance. Multiple batches run year-round for Class 10, 12, graduates, and undergraduates.	School children, college students, competitive exam aspirants	Jamnagar, Rajkot, Dhrol, Tharad, Lakhani, Junagarh, Jam Jodhpur
Digital Literacy & Vocational Training	Foundational computer education (MS Office, multimedia) for school children. Specialized digital skill training for women, covering financial literacy, online safety, and fraud prevention.	School children, rural women	Lakhani and surrounding blocks
Healthcare Awareness Campaigns	Preventive health workshops, critical care camps, and awareness drives on hygiene and disease prevention. Conducted in partnership with the Billion Hearts Foundation and The End Foundation, including special camps for Narmada Parikrama pilgrims.	Rural communities, pilgrims, women, children	Banaskantha, Narmada corridor
Senior Citizen Welfare	Lifelong learning programs, digital literacy sessions, health awareness talks, and social engagement initiatives for elders. Topics include tourism, financial literacy, and preventive healthcare.	Elderly population (60+ years)	Lakhani, Tharad
Infrastructure Development	Installation of drinking water tanks and borewells for irrigation. Renewal of classroom furniture. Construction of modern computer labs equipped with projectors, hardware, and digital tools.	Students at Shri S.K. Bhedru Vidyalaya and Shri Vivekananda Vidyamandir	Lakhani
Educational Support Resources	Distribution of notebooks, stationery, uniforms, and operational supplies to students from underserved communities, ensuring they have the tools needed to learn and succeed.	Underprivileged school children	Schools and academies across Gujarat
Animal Welfare	Feeding programs for stray and domestic animals. Medical support for injured animals. Awareness sessions for children and families on responsible pet care and kindness toward animals.	Street animals, domestic animals, school children	Trust-operated school areas, community centers
Community Seva & Outreach	Distribution of books, tea, and buttermilk to over 10,000 individuals. Seva camps at Ambaji and other regional locations offering support to pilgrims and locals.	Pilgrims, rural poor, general community	Ambaji, regional tourist locations, Gujarat
National & Cultural Celebrations	Observance of Republic Day, Independence Day, International Women's Day, and birth anniversaries of national leaders (Dr. Ambedkar, K.B. Hedgewar, Lokmanya Tilak) to instill civic pride and social responsibility.	Students, community members	Trust schools and centers across Gujarat

Story 1: From Fear to Finance - Rekha's Digital Journey

"I was always afraid of banks. I thought they were only for educated people. When the Trust's digital literacy camp came to our village, I almost didn't attend. But the trainer was a woman like me, and she spoke our language. Today, I not only operate my own savings account but also teach other women in my self-help group how to avoid online fraud. For the first time, I feel I have control over my money and my life." - Rekha Ben, Beneficiary, Women's Digital Literacy Program, Lakhani

Story 2: Dreaming Beyond the Farm - Ashok's UPSC Aspiration

"My father is a farmer. He wanted me to work in the fields. But I dreamed of becoming a collector. I couldn't afford coaching in the city. Then I heard about Project Sampurna Shiksha. The teachers here didn't just teach me subjects; they believed in me. I cleared the preliminary exam this year. Even if I don't succeed immediately, I now know that someone like me can dream beyond the farm." - Ashok Solanki, Student, Competitive Exam Coaching, Tharad

Impact

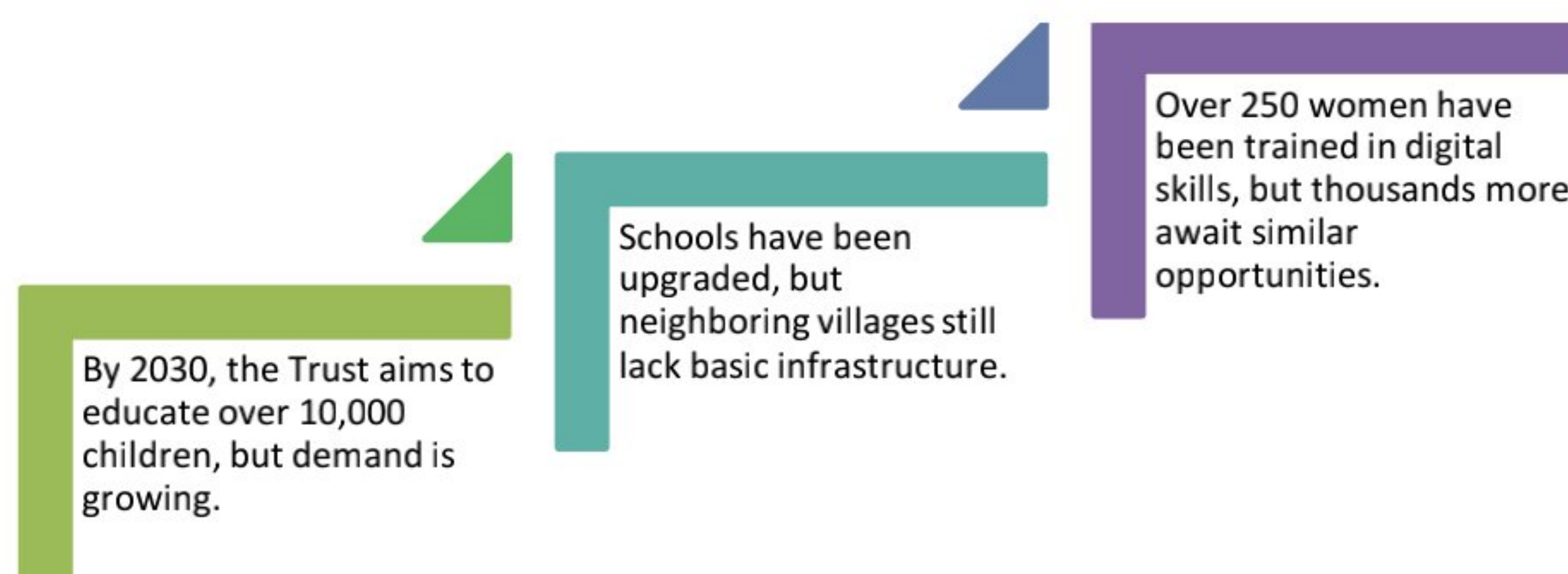
Impact Area	Metric	Achievement (FY 2024-25)
Education	Children provided academic support	5,000+ underprivileged children across 7+ districts
Women Empowerment	Women trained in digital & financial literacy	250+ women equipped with computer skills and fraud awareness
Community Outreach	Individuals served through food/book distribution	10,000+ people reached with tea, buttermilk, and books
Environment	Plants supported through irrigation infrastructure	1,000+ plants across 25,000 sq. ft. of school gardens
Infrastructure	Schools upgraded with modern facilities	2 schools (Shri S.K. Bhedru Vidyalaya, Shri Vivekananda Vidyamandir) received computer labs, water tanks, and furniture
Animal Welfare	Street animals provided food and medical aid	Hundreds of stray animals reached through feeding programs and medical support
Healthcare	Individuals reached through health camps	Hundreds of villagers and pilgrims screened for heart conditions and educated on hygiene
Skill Development	Youth and women trained in vocational skills	Multiple batches across training centers in Lakhani

Story 3: A Second Inning - Bhimabhai's Digital Discovery

"At 72, I thought my life was about sitting at home and waiting. My children have moved to the city. I felt useless. Then the Trust started a senior citizen program in our village. They taught me how to use a smartphone to talk to my grandchildren. I attended sessions on tourism and health. Now, I feel connected to the world again. I am not just alive; I am living." - Bhimabhai Patel, Beneficiary, Senior Citizen Welfare Program, Lakhani

Why Now?

The next five years are critical. As India marches toward becoming a \$5 trillion economy, the gap between urban and rural India risks widening further. Without urgent investment in rural education, digital inclusion, and healthcare, millions will be left behind.



K.K. Bhedru Charitable Trust is not just responding to needs; we are building a model of sustainable, community-led development that can be replicated across Gujarat and beyond. The time to act is now—because every child out of school, every woman without a skill, and every elder without care is a loss not just to their family, but to the nation.

Board of Directors / Trustees

Name	Designation	Background & Expertise	Tenure
Mr. Laljibhai Patel	Founder & Chairman / President	A veteran social worker with over two decades of grassroots experience (since 2000). Mr. Patel's journey began with teaching underprivileged children under a tree and has since grown into building a multi-district organization. His expertise lies in community mobilization, educational advocacy, and strategic vision. He is the driving force behind the Trust's expansion and its unwavering focus on the marginalized.	Since inception (2014)
Mr. Bharatbhai Chaudhary	Secretary	A founding member with deep roots in the Banaskantha community. Mr. Chaudhary brings expertise in organizational administration, compliance, and legal governance. He ensures that the Trust operates within all regulatory frameworks and maintains meticulous records. His steady hand manages the day-to-day compliance and statutory requirements.	Since 2014
Mr. Babarabhai N. Chaudhary	Trustee	Mr. Babarabhai N. Chaudhary is a highly respected social activist with decades of experience working for the welfare of grassroots communities. His influence and reputation extend far beyond Banaskantha district, reaching policymakers at the state level who hold his insights in high regard. Deeply moved by the relentless struggle and dedication of founder Mr. Laljibhai Patel, Mr. Chaudhary extended his mentorship and association to K.K. Bhedru Charitable Trust. His guidance has been instrumental in shaping the Trust's journey, providing strategic direction, strengthening its credibility, and helping it navigate challenges with wisdom and purpose.	Since 2019

Leadership Team

Name	Designation	Key Responsibilities
Mr. Laljibhai Patel	Chairman / President	Overall strategic leadership, fundraising, partnership cultivation, and final program approval.
Dr. Moni Upadhyay	Managing Director	Strategic Planning & Institutional Development, Corporate & CSR Collaboration, Policy-Level Decision Making, Sustainable & Impact-Driven Program Execution, Transparent Governance & Accountability
CA Purvin Mariyankari	Financial Advisor	Financial Planning & Strategic Budget Advisory, Statutory Compliance & Regulatory Filings, Audit Supervision & Financial Reporting, CSR Fund Structuring & Utilization Oversight, Risk Assessment & Financial Governance Strengthening
Shekha Devi	CSR Fund Manager	CSR Budget Planning & Allocation, Financial Compliance & Documentation, Donor Reporting & Accountability, Impact-Based Fund Utilization, Audit Coordination
Prajapati Aravind	Principal, Vivekanand Vidhyalay Primary School	Academic Planning & Monitoring, Institutional Management, Student Development Programs, Community & Parent Engagement
Haresh Bhai B. Chaudhary	Principal, Shree S.K. Bhedru Vidhyalay	Academic Administration, Institutional Governance, Curriculum Oversight, Student Welfare & Development
Navin Mali	Chanakya Academy Head	Academic Strategy Implementation, Faculty Coordination, Performance Monitoring, Institutional Growth Planning
Renu Sihag	Community Development Leader	Grassroots Program Support, Community Mobilization, Stakeholder Engagement, Field-Level Coordination, Promoting Sustainable Development Practices
Aditi Mandoli	Government Project Coordinator	Project Planning & Operational Execution, Government Liaison & Documentation, Stakeholder Coordination, Timeline Monitoring & Evaluation, Field-Level Impact Assessment
Mithun Mali	Digital Marketing - CSR	Digital Branding Strategy, CSR Campaign Design, Social Media Growth & Engagement, Impact Storytelling & Content Development, Online Community Outreach
Anushka	Social Media	Social Media Content Planning, Awareness Campaign Execution, Event Coverage & Impact Updates, Community Engagement Online

Capacity on the Ground

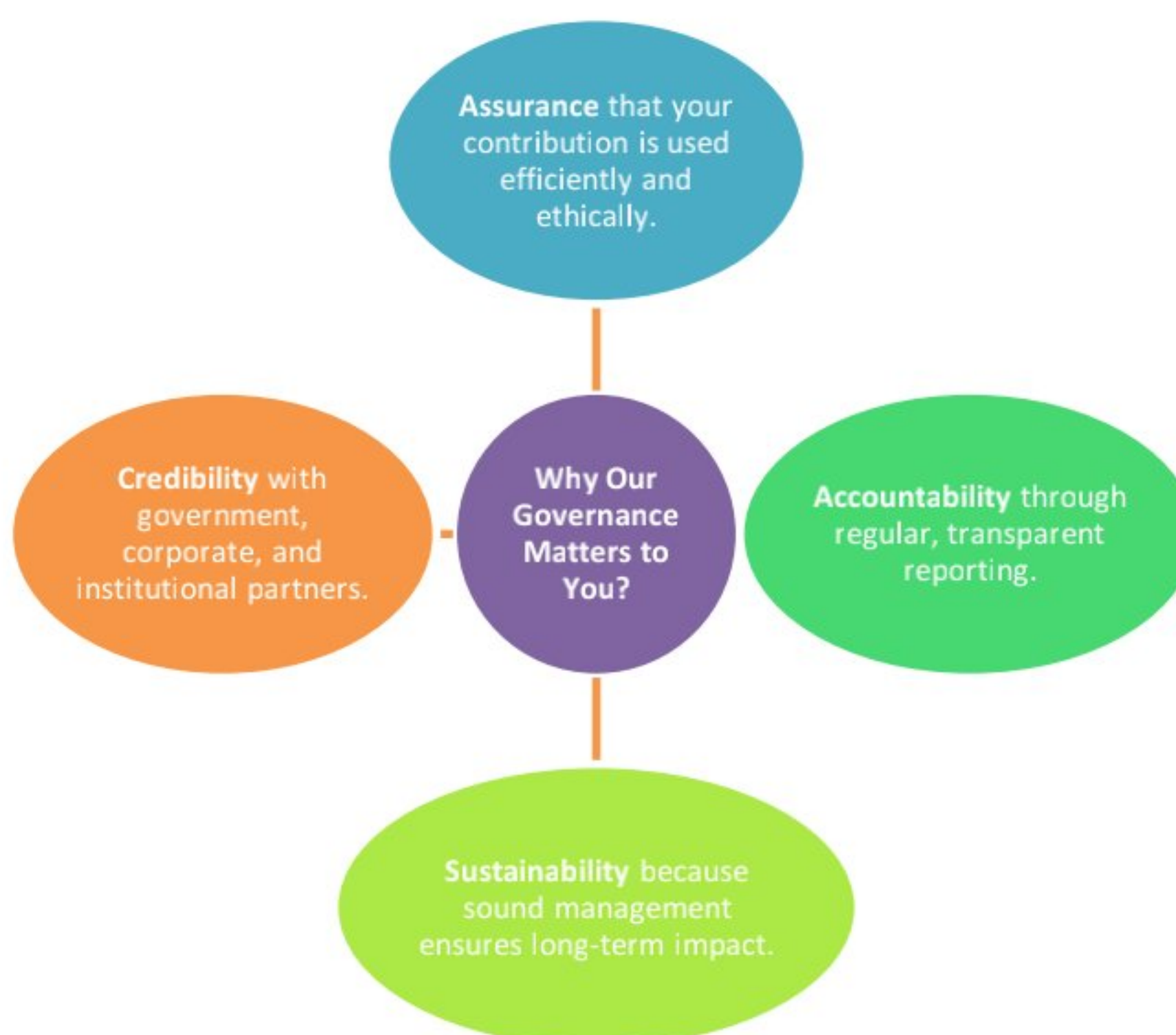
K.K. Bhedru Charitable Trust operates with a hybrid model that combines a core team of dedicated professionals with a vast network of community-based volunteers. This structure ensures both stability and scalability. The Trust employs a dedicated team of full-time and part-time staff who manage programs, administration, finance, and field operations. This includes: Program Coordinators, Field Supervisors, Digital Trainers, Administrative Staff, Support Staff (for schools and facilities)

Volunteer Network

Our greatest strength lies in our army of community volunteers. These are local youth, women leaders, teachers, and compassionate individuals who amplify our reach and ensure last-mile delivery. Active Volunteers - Hundreds of volunteers contribute regularly to feeding programs, educational support, event organization, and awareness campaigns. Community Champions - Local leaders and influencers who mobilize communities and ensure program acceptance. Student Volunteers - Young students from our schools who participate in cleanliness drives, animal welfare activities, and cultural events, learning the value of service early.

Capacity Highlights

Capacity Indicator	Details
Staff Strength	A dedicated team managing operations across multiple districts
Active Volunteers	Hundreds of regular volunteers supporting grassroots implementation
Schools Managed/Supported	Shri S.K. Bhedru Vidyalaya, Lakhani; Shri Vivekananda Vidyamandir, Lakhani; support to multiple other institutions
Training Centers	Multiple digital literacy and vocational training centers operational
Geographic Spread	Programs active across Banaskantha, Jamnagar, Rajkot, Junagarh, and beyond



"When I started working with a few children under a tree, I never imagined we would grow into an organization reaching thousands. But one thing has remained constant, our commitment to honesty and service. Every member of our team, from the Board to our youngest volunteer, shares this commitment. We welcome you to examine our work, question our methods, and join us in building a more compassionate India."

Mr. Laljibhai Patel
 Founder & Chairman, K.K. Bhedru Charitable Trust

The "Trust" Factor

At K.K. Bhedru Charitable Trust, we believe that trust is earned through transparency. Donors, partners, and beneficiaries have the right to know exactly how every rupee is utilized. We are committed to the highest standards of financial disclosure, ethical management, and regulatory compliance. Our accounts are regularly audited by independent Chartered Accountants, and we proudly share our financial summary to demonstrate that the majority of your contributions go directly to programs that transform lives.

Financial Summary (FY 2024-25)

Annual Income - Where the Funds Come From

Source of Income	Amount (₹)	Percentage
Donations	₹ 13,44,814.57	62.5%
Coaching Fees	₹ 6,77,966.00	31.5%
Room Rent	₹ 1,11,742.00	5.2%
Other Income	₹ 15,254.28	0.7%
Bank Interest	₹ 539.00	0.1%
TOTAL INCOME	₹ 21,50,315.85	100%

Annual Expenditure - Where the Funds Go

FUND UTILIZATION 2024-25		
PROGRAM EXPENSES	82.5%	(Directly on beneficiaries)
ADMIN & OPERATIONS	5.0%	
REINVESTED AS SURPLUS	18.5	(For future programs & growth)
82.5 paisa of every rupee goes directly to programs		

Funding Sources

Source Category	Amount (₹)	Percentage
Donations (Individual & CSR)	₹ 13,44,814.57	62.5%
Fees (Coaching & School)	₹ 6,77,966.00	31.5%
Institutional Income (Rent)	₹ 1,11,742.00	5.2%
Other Income & Interest	₹ 15,793.28	0.8%
TOTAL	₹ 21,50,315.85	100%

Key Financial Ratios & Indicators

Indicator	Value	Significance
Program Efficiency Ratio	82.5%	Strong ratio indicating that the majority of funds are spent on charitable programs.
Administrative Overhead	5%	Well below industry standards, demonstrating prudent financial management.
Donations Received	₹ 13.45 Lakhs	Reflects growing donor confidence in the Trust's work.
Zero Outstanding	₹ NIL	No funds locked in old receivables; all collections utilized promptly.
Audit Compliance	100%	No audit qualifications or adverse remarks.

Note from Our Chairman

"Transparency is not just a legal requirement for us; it is a moral commitment. When a farmer in Lakhani donates ₹100 or a corporate partner contributes ₹1 lakh, they are placing their trust in us. Our audited accounts are our way of saying: we honor that trust."

Mr. Laljibhai Patel, Founder & Chairman

Major Milestones



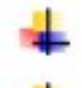
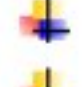

Year	Milestone	Significance
2000	Founding Vision	Mr. Laljibhai Patel begins grassroots social work, teaching underprivileged children in Lakhani.
2014	Formal Registration	K.K. Bhedru Charitable Trust is registered (F/5797/Banaskantha), giving structure and scale to the vision.
2020	NGO Darpan Registration	Empanelment with NITI Aayog (GJ/2020/0250578) opens doors for government partnerships and CSR collaborations.
2021	12A & 80G Registrations	Tax exemptions secured, enabling donors to claim benefits and increasing fundraising credibility.
2024	CSR Registration	Registered under the Companies Act (CSR000113107), making the Trust eligible for corporate social responsibility funding.
2024-25	Project Sampurna Shiksha	Reached 5,000+ children across 7+ districts with academic support and competitive exam coaching.
2024-25	Women's Digital Literacy	Trained 250+ women in digital skills, financial literacy, and fraud prevention.
2024-25	Community Outreach	Served 10,000+ individuals through food, buttermilk, and book distribution drives.
2024-25	Infrastructure Development	Upgraded 2 schools with modern computer labs, water systems, and furniture, benefiting hundreds of students.
2024-25	Healthcare Partnerships	Collaborated with Billion Hearts Foundation and The End Foundation to conduct health camps for rural communities and pilgrims.
2025	National Service Award	Chairman Laljibhai Patel honored for lifetime contribution to social service.
2025	Clean Audit	Successfully completed audit for FY 2024-25 with zero outstanding and zero adverse remarks.

Awards & Recognitions

S. No.	Award / Recognition Name	Recipient	Awarding Organization / Presented By
1	Pure Social Impact Award 2022	Mr. Laljibhai Patel (Founder)	Pure India Trust
2	National Service Award 2023	Mr. Laljibhai Patel (Chairman)	Sangam Academy & Publication
3	Samaj Bhusan Puraskar	Mr. Laljibhai Patel / K.K. Bhedru Charitable Trust	
4	NSSACT Certificate of Recognition 2023	K.K. Bhedru Charitable Trust	Niswarth Seva Sangathan
5	Best Charity Award	Mr. Laljibhai Patel	UWPF - NewDelhi
6	Best Achievement Certificate - 2025	Mr. Laljibhai Patel / Trust Team	NGO Guru

Commitment to Excellence

These awards & recognitions are not endpoints but milestones in an ongoing journey. Every award received, every life touched, and every partnership forged strengthens our resolve to:

-  Reach more underprivileged children with quality education
-  Empower more women with digital and vocational skills
-  Care for more senior citizens and animals
-  Build more infrastructure for sustainable community development
-  Forge more partnerships for greater impact

Partners in progress. Collaborators in change.

At K.K. Bhedru Charitable Trust, we firmly believe that collective action creates lasting impact. Our partnerships with corporate houses, government bodies, philanthropic foundations, and individual donors amplify our reach and strengthen our credibility. We are proud to collaborate with organizations that share our vision of an inclusive and empowered society.

Corporate & CSR Partners

Partner Name	Type	Area of Collaboration
Rasna Private Limited	Corporate CSR	Book distribution drive at Shri S.K. Bhedru Vidyalaya, Lakhani; educational support for underprivileged children
Billion Hearts Foundation	Foundation / Trust	Healthcare awareness camps, critical care screenings, preventive health programs
The End Foundation	Foundation / Trust	Preventive health camps, awareness drives, support for Narmada Parikrama pilgrims
PPI Pumps Private Limited	Corporate CSR	Supporting community development initiatives
Pure India Trust	Foundation / Trust	Collaborating on social welfare programs
ICICI Foundation	Corporate Foundation	Education and livelihood support programs
CSCTWA	Organization / Trust	Community development collaborations
Simran Seva Pratisthan	Foundation / Trust	Social welfare and community service initiatives
Solutions 4 Non Profit	Advisory / Consulting	Capacity building and organizational development support

Institutional & Government Partners

Partner	Type	Area of Collaboration
NITI Aayog (NGO Darpan)	Government of India	Registration and empanelment for government schemes and collaborations (Unique ID: GJ/2020/0250578)
MSME (Ministry of Micro, Small & Medium Enterprises)	Government of India	Udyam Registration for institutional credibility (Reg No. GJ-04-0019524)
GeM (Government e-Marketplace)	Government of India	Registered for government procurement and partnerships (QL9E220007227032)

Financial Partners

Partner	Type	Purpose
Bank of Baroda	Nationalized Bank	Primary banking partner (Account No. 59710100002587, IFSC: BARBOLAKMEH)
BDCC Bank	Cooperative Bank	Banking partner for school accounts (Account No. 118000943828)

Grassroots Collaborators

Type of Collaborator	Area of Collaboration
Local Schools	Educational programs, infrastructure support, student outreach
Village Panchayats	Community mobilization, event organization, awareness camps
Women's Self-Help Groups (SHGs)	Digital literacy training, skill development programs
Youth Groups	Volunteer mobilization, event support, awareness campaigns

Innovating for impact. Scaling for change.

At K.K. Bhedru Charitable Trust, we believe that sustainability requires innovation, and impact requires scale. Our future plans are not merely aspirational, they are grounded in years of grassroots experience, direct community feedback, and a deep understanding of the gaps that exist in rural development. Every initiative we propose is designed to be socially innovative, measurable, and aligned with CSR priorities of corporate partners.

The Need on the Ground

Need Identified	Ground Reality
Digital Divide Widening	Over 250 women trained in FY25, but thousands more in nearby villages lack access to digital literacy.
Youth Unemployment	High demand for competitive exam coaching (UPSC, GPSC) beyond current capacity of 5,000 students served.
Senior Citizen Isolation	Successful programs reached hundreds, but neighboring blocks have no such support for elders.
Healthcare Blind Spots	Health camps revealed undiagnosed chronic conditions; need for regular, preventive healthcare outreach.
Infrastructure Gaps	Two schools upgraded—but dozens more in the region lack basic facilities like computer labs and clean water.
Animal Welfare Neglect	Feeding and medical programs showed high demand; need for structured, scalable animal care initiatives.
Women's Economic Empowerment	Digital literacy success stories highlight need for advanced vocational training and enterprise support.

Socially Innovative Approaches

Innovation	Approach	Expected Impact
Mobile Digital Literacy Vans	Taking computer labs to remote villages rather than expecting communities to travel	Reach 1,000+ additional women and youth annually
Community Elder Champions	Training senior citizens as peer educators and digital mentors for other elders	Scalable, dignified elder engagement
School-Animal Welfare Integration	Embedding animal care curriculum in schools to build empathy from childhood	Sustainable behavior change
Solar-Powered Computer Labs	Off-grid digital education centers for villages with unreliable electricity	Uninterrupted learning, environmental sustainability
Tele-health Kiosks	Partnering with healthcare providers for remote consultations in far-flung villages	Reduced travel, early diagnosis
Women's Digital Enterprise Hubs	Moving beyond literacy to supporting women-run digital businesses (e.g., printing, data entry)	Economic independence, livelihood creation

Project Pipelines

CSR Focus Area (Schedule VII)	Proposed Project	Target Beneficiaries	Geographic Focus
Education (i)	Project Utkarsh 2.0 - Scaling competitive exam coaching and remedial education	10,000+ underprivileged children	Banaskantha, Patan, Mehsana
Vocational Skills (ii)	Women's Digital Enterprise Hubs - Advanced digital skills + micro-enterprise support	500+ rural women	Lakhani, Tharad, Dhanera
Healthcare (i)	Mobile Health & Tele-medicine Camps - Preventive health screenings, awareness, referrals	20,000+ rural and tribal populations	Narmada corridor, Ambaji region
Senior Citizens (ix)	Elder Empowerment & Digital Inclusion Program - Health, digital literacy, social engagement	1,000+ senior citizens	Banaskantha, Junagarh
Animal Welfare (ix)	Compassionate Communities - Structured feeding, medical camps, school education	5,000+ animals, 50+ schools	Lakhani, Tharad, Rajkot

Environmental Sustainability (iv)	Green Schools Initiative - Solar labs, rainwater harvesting, kitchen gardens	20+ schools, 5,000+ students	Banaskantha district
Rural Development (x)	Model Village Project - Integrated development in one village (education, health, livelihood, infrastructure)	One complete village (pilot)	To be identified based on need

Scaling Plans (2025-2028)

Phase	Timeline	Focus Areas	Target Metrics
Phase 1 - Consolidation & Piloting	Year 1 (2025-26)	Pilot mobile digital vans, tele-health kiosks, model village project in one location	2 mobile vans, 5 tele-health kiosks, 1 model village
Phase 2 - Expansion	Year 2 (2026-27)	Scale successful pilots to 3 new blocks; add 5 new schools to Green Schools Initiative	5 mobile vans, 15 tele-health kiosks, 10 schools
Phase 3 - Replication	Year 3 (2027-28)	Replicate model village project in 3 new villages; expand women's enterprise hubs to 2 new districts	3 model villages, 5 women's hubs, 20,000+ beneficiaries

Geographic Expansion Strategy

District	Current Presence	Proposed Expansion	Rationale
Banaskantha	Strong (Lakhani, Tharad, Dhanera)	Deepen reach to all 14 blocks	Home base; highest concentration of underserved villages
Patan	Limited	Initiate education and women's programs	Neighboring district with similar demographics
Mehsana	None	Pilot digital literacy for women	Growing industrial corridor with migrant families
Sabarkantha	None	Healthcare and senior citizen pilots	Tribal population with limited healthcare access
Narmada Corridor	Pilgrim health camps	Establish permanent health outreach	High pilgrim footfall; tribal communities
Junagarh	Educational programs	Add animal welfare and senior citizen components	Existing trust presence; community requests

Infrastructure Development Plans

Infrastructure	Purpose	Proposed Locations	Year
Digital Literacy Hubs	Permanent computer training centers	Lakhani, Tharad, Dhanera, Patan	2025-26
Senior Citizen Wellness Centers	Day-care, health monitoring, digital access	Lakhani, Tharad, Junagarh	2026-27
Mobile Training Vans	Digital literacy on wheels	All expansion blocks	2025-26
School Upgrades (Phase 2)	Computer labs, water, sanitation, solar	10 additional schools	2026-27
Animal Care Shelters	Temporary shelter and treatment centers	Lakhani, Tharad, Rajkot	2027-28

Partnership Opportunities

Project	CSR Focus Area	Investment Required	Beneficiaries
Mobile Digital Literacy Van	Education / Skill Development	₹15-20 Lakhs per van	1,500+ annually per van
Model Village (Integrated)	Rural Development	₹50-75 Lakhs per village	5,000+ per village
School Upgrades (per school)	Education	₹5-10 Lakhs per school	500+ students per school
Digital Literacy Hub (Permanent)	Education / Skill Development	₹10-15 Lakhs per hub	1,000+ annually per hub
Senior Citizen Wellness Center	Senior Citizens	₹15-20 Lakhs per center	500+ elders annually
Tele-health Kiosk	Healthcare	₹2-3 Lakhs per kiosk	2,000+ annually per kiosk

Your Support. Their Future. Our Viksit Bharat.

At K.K. Bhedru Charitable Trust, we believe that the dream of a Viksit Bharat (Developed India) cannot be realized until every child is educated, every woman is empowered, every senior citizen is cared for, and every community has access to dignity and opportunity. The vision of a Naya Bharat, an India that is inclusive, compassionate, and prosperous, is built one classroom, one digital literacy class, one health camp at a time.

And you can be an architect of this transformation.

Choose Your Role in Building Viksit Bharat

I Want To...	Best For	My Contribution to Viksit Bharat
Donate	Individuals, Families, Groups	Fund a child's education, a woman's digital training, or a senior's wellness, building human capital for India's future
Partner	Corporations, Foundations, Government	Align your CSR with the Prime Minister's vision of a developed India through grassroots impact
Volunteer	Professionals, Students, Retirees	Share your time and skills to build capacity at the last mile
Advocate	Everyone	Spread the word; amplify stories of change from the heart of Bharat

The Government of India has envisioned a Viksit Bharat @ 2047, a developed nation where every citizen has access to quality education, healthcare, dignity, and opportunity. But this vision cannot be achieved by government alone. It requires Jan Bhagidari (people's participation).

Viksit Bharat Pillar	K.K. Bhedru's Contribution	Your Role
Education for All	5,000+ children educated, schools upgraded, competitive exam coaching provided	Your donation funds the classrooms where future leaders of Naya Bharat learn
Women's Empowerment	250+ women trained in digital literacy, financial independence	Your support enables women to become equal participants in India's growth story
Health & Well-being	Health camps, senior citizen programs, preventive care	Your partnership ensures a healthier, more productive India
Digital Inclusion	Computer labs, digital literacy for rural communities	Your contribution bridges the digital divide in Bharat
Environmental Sustainability	1,000+ plants nurtured, green school initiatives	Your gift helps build a sustainable, green Viksit Bharat
Animal Welfare	Compassionate communities, feeding programs	Your kindness builds a humane India where no being is left behind

Build Naya Bharat, One Step at a Time

Donation Amount	Your Contribution to Viksit Bharat
₹500	Provides stationery and notebooks for 5 children—equipping future citizens of Naya Bharat
₹1,000	Covers digital literacy training for one woman—enabling her to participate in India's digital economy
₹2,500	Supports a senior citizen's health check-up—ensuring dignity for those who built today's India
₹5,000	Funds computer repairs for our school labs—preparing rural youth for a digital India
₹10,000	Feeds and provides medical care for 50 street animals—building a compassionate Viksit Bharat
₹25,000+	Supports infrastructure like classroom furniture or water tanks—strengthening the foundation of Naya Bharat

Sustained Support for Lasting Impact

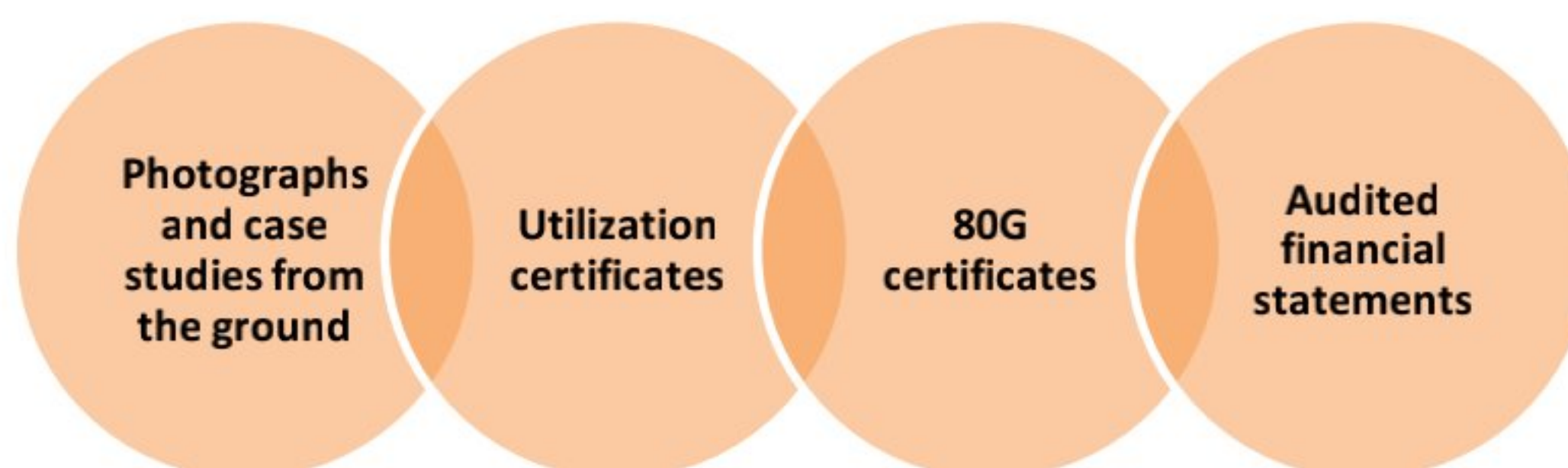
Monthly Gift	Your Annual Impact for Viksit Bharat
₹500 / month	Supports one child's coaching classes for the full year—nurturing a future leader
₹1,000 / month	Funds digital literacy for 12 women annually—empowering a dozen families
₹2,500 / month	Maintains a computer lab for 100+ students—building digital Bharat
₹5,000 / month	Runs a monthly health camp in a remote village—ensuring health for all

Corporate / CSR Donations - Partner in Nation Building

CSR Contribution	Your Role in Viksit Bharat
₹1 - ₹5 Lakhs	Sponsor a mobile digital literacy van, taking Naya Bharat to remote villages
₹5 - ₹10 Lakhs	Adopt a school for infrastructure upgrade, building the classrooms of Viksit Bharat
₹10 - ₹25 Lakhs	Fund a complete Model Village project, demonstrating integrated rural development
₹25 Lakhs+	Multi-year, multi-district scaling partnership, co-creating Viksit Bharat at scale

Partnership Type	Alignment with Viksit Bharat
Project-Specific Partnership	Fund a specific initiative aligned with your CSR priorities and national development goals
Geographic Adoption	Adopt a village or block for comprehensive development, contributing to balanced regional growth
Employee Engagement	Engage your employees through volunteering, payroll giving, or mentoring, building a culture of giving
Institutional Grants	Multi-year funding for scaling proven models across multiple districts, accelerating the journey to Viksit Bharat

We provide:



How to Donate:

Method	Details
Bank Transfer (RTGS/NEFT/IMPS)	Bank: Bank of Baroda, Lakhni Branch Account Name: Chaudhari Kalabhai Khetabhai Bhedaru (Bhagat) Charitable Trust Account No: 59710100002587 IFSC Code: BARBOLAKMEH Branch Code: LAKMEH
Cheque / DD	Payable to: Chaudhari Kalabhai Khetabhai Bhedaru (Bhagat) Charitable Trust Mailed to: Trust Address (below)
Online / UPI	Coming soon: Website donation gateway
Foreign Donations	We are in the process of obtaining FCRA registration. For now, foreign donors may contact us directly for alternative options.
Tax Benefits: All donations are eligible for 80G deduction under Income Tax Act (Reg No. AABTC8815EF20214). You will receive a receipt and 80G certificate for your contribution to nation-building.	

Be a "Karmayogi" for Naya Bharat

Volunteer Type	Who Can Apply	Your Role in Viksit Bharat
Teaching Volunteers	Retired teachers, college students, professionals	Build human capital for Naya Bharat through education
Digital Literacy Trainers	IT professionals, tech-savvy individuals	Bridge the digital divide and enable financial inclusion
Healthcare Volunteers	Doctors, nurses, paramedics, medical students	Contribute to a healthy, productive India
Senior Citizen Support	Anyone with patience and empathy	Honor those who built today's India with dignity and care
Animal Welfare Volunteers	Animal lovers, veterinary students	Build a compassionate, humane Viksit Bharat
Event Volunteers	Students, community members	Strengthen community bonds and national pride
Fundraising Volunteers	Professionals, communicators	Mobilize resources for nation-building
Photography / Storytelling	Creatives, journalists	Document the journey of Naya Bharat from the grassroots

How to Volunteer

- Step 1: Send an email to support@kkbhedru.org with subject "Volunteer for Viksit Bharat"
- Step 2: Tell us about your skills, interests, and availability
- Step 3: We will match you with the right opportunity
- Step 4: Welcome to the team of nation-builders!

Advocate

Action	Your Contribution to Viksit Bharat
Follow Us on Social Media	Stay updated; share stories of transformation from rural Gujarat
Share Our Posts	Amplify the message of Naya Bharat to your network
Talk About Us	Inspire others to join the journey of nation-building
Write a Review	On Google, social media, or platforms like GiveIndia
Include Us in Campaigns	Birthday fundraisers, workplace giving, every bit counts

Platform	Handle / Link 1	Handle / Link 2
Facebook	facebook.com/laljibhai.patel.779	facebook.com/kkbhedrucharitabletrust
Twitter / X	x.com/Lalabha82305682	
Instagram	instagram.com/kkbhedrucharitabletrust	instagram.com/laljibhai.patel.779
LinkedIn	linkedin.com/in/laljibhai-patel	
YouTube	youtube.com/@laljipatel_kkbhedru	youtube.com/@kkbhedru

The India of our dreams, a Viksit Bharat, a Naya Bharat, will not be built in Delhi alone. It will be built in villages like Lakhani, Tharad, and Jamnagar. It will be built in classrooms, computer labs, health camps, and animal shelters. It will be built by people like you, who believe that development must reach the last mile.

Mr. Laljibhai Patel
 Founder & Chairman
 K.K. Bhedru Charitable Trust

"Alone we can do so little; together we can do so much."

